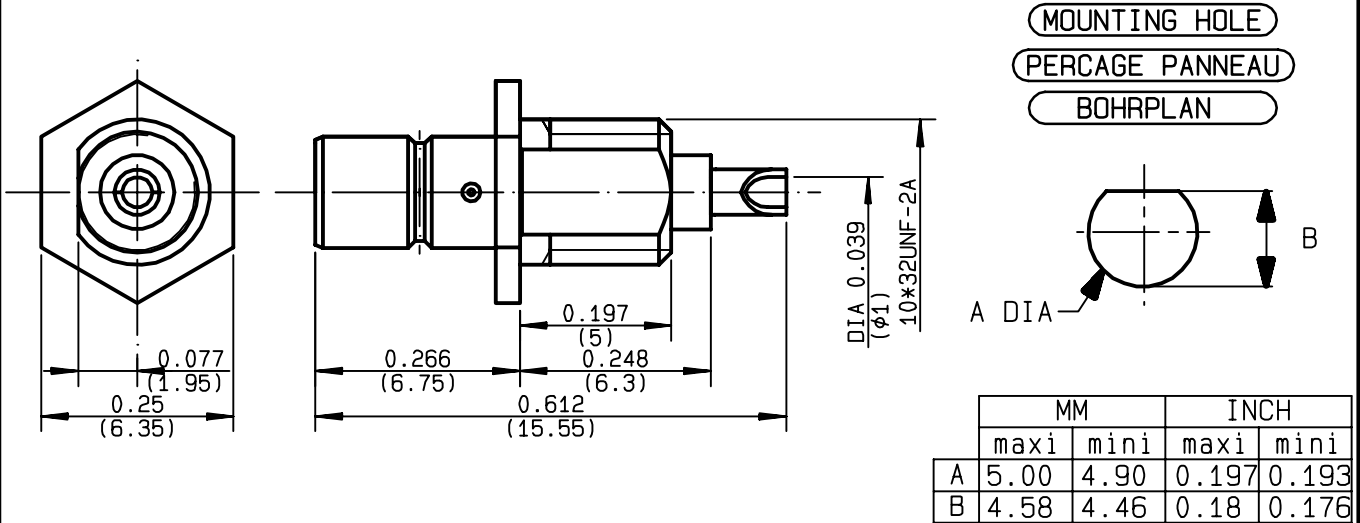


**ADJUSTABLE SCREW PLUG RECEPTACLE  
FRONT MOUNT - SOLDER POT**

**R114.553.320**  
**SERIES SMB**



NOMINAL IMPEDANCE	<b>50</b> Ω	CABLES :	OTHERS CHARACTERISTICS		
FREQUENCY RANGE	<b>0-4</b> GHz		<b>* COAXIAL TRANSMISSION LINE ONLY</b>		
TEMPERATURE RATING	<b>-65/+165</b> °C		CABLE RETENTION	<b>NA</b>	N Mini
V.S.W.R	<b>1.05*</b> + <b>.008</b> x F(GHz)Maxi		CENTER CONTACT RETENTION		
RF INSERTION LOSS	<b>0.03*</b> √F(GHz) dB Maxi		Axial force - mating end	<b>10</b>	N Mini
VOLTAGE RATING	<b>500</b> Veff Maxi		Axial force - opposite end	<b>10</b>	N Mini
DIELECTRIC WITHSTANDING VOLTAGE	<b>1000</b> Veff Mini		Torque	<b>NA</b>	cm.N Mini
INSULATION RESISTANCE	<b>1000</b> MΩMini		RECOMMENDED TORQUES		
HERMETIC SEAL	<b>NA</b> Atm.cm <sup>3</sup> /s		Mating	<b>NA</b>	cm.N
LEAKAGE (pressurized only)	<b>NA</b>		Panel nut	<b>60</b>	cm.N
MECHANICAL DURABILITY	<b>500</b> Cycles	Clamp nut	<b>NA</b>	cm.N	
WEIGHT	<b>.81</b> gr				
SPECIFICATION					

CONNECTOR PARTS	MATERIALS	FINISH	(all values are given in micrometers)
BODY	BRASS	NICKEL 2	
OUTER CONTACT			
CENTER CONTACT	BRASS	GOLD 1.3 OVER NICKEL 2	
INSULATOR	PTFE	-	
GASKET		-	
OTHERS PIECES			

ISSUE	CREATION DATE	FILE PART-NUMBER	
<b>9943A00</b>	<b>30/07/1997</b>	<b>97-0104-803</b>	

The information given here is subject to change without notice. Design changes may be in order to improve the product.